

THIS INSTRUMENT PREPARED BY  
**CARNAHAN AND ASSOCIATES, INC.**  
 CONSULTING ENGINEERS  
 ENGINEERS SURVEYORS PLANNERS  
 6191 WEST ATLANTIC BLVD. MARGATE, FLORIDA 33063  
 AUGUST 1990 891202 B.K.M.

(BABCOCK P.U.D.)

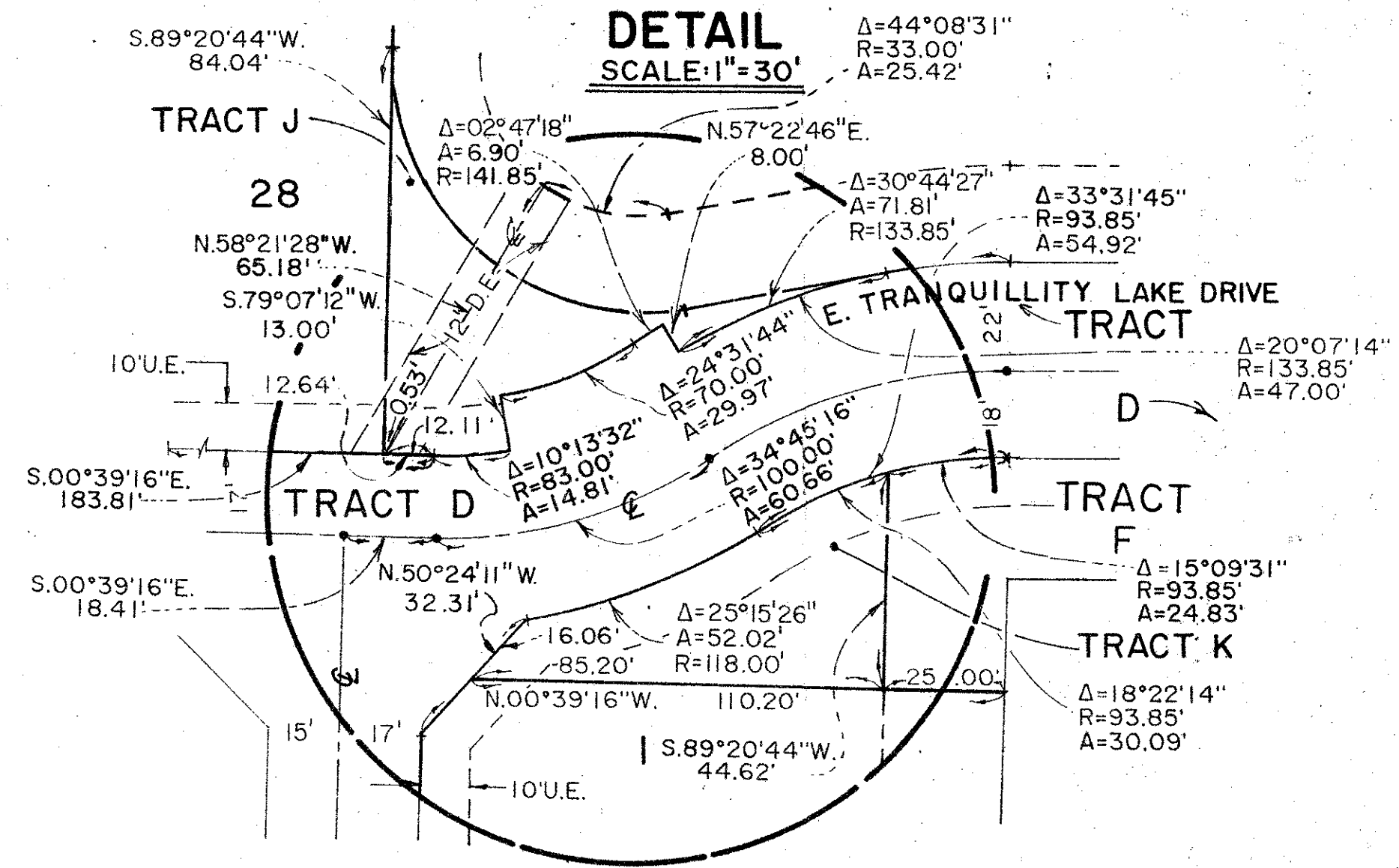
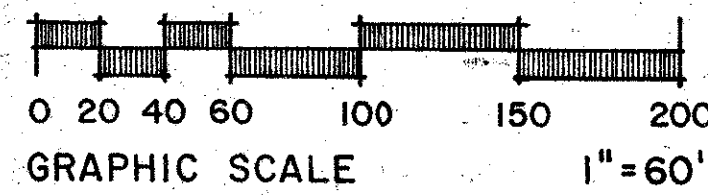
# WATERWAYS AT DELRAY-PHASE I

488-002

181

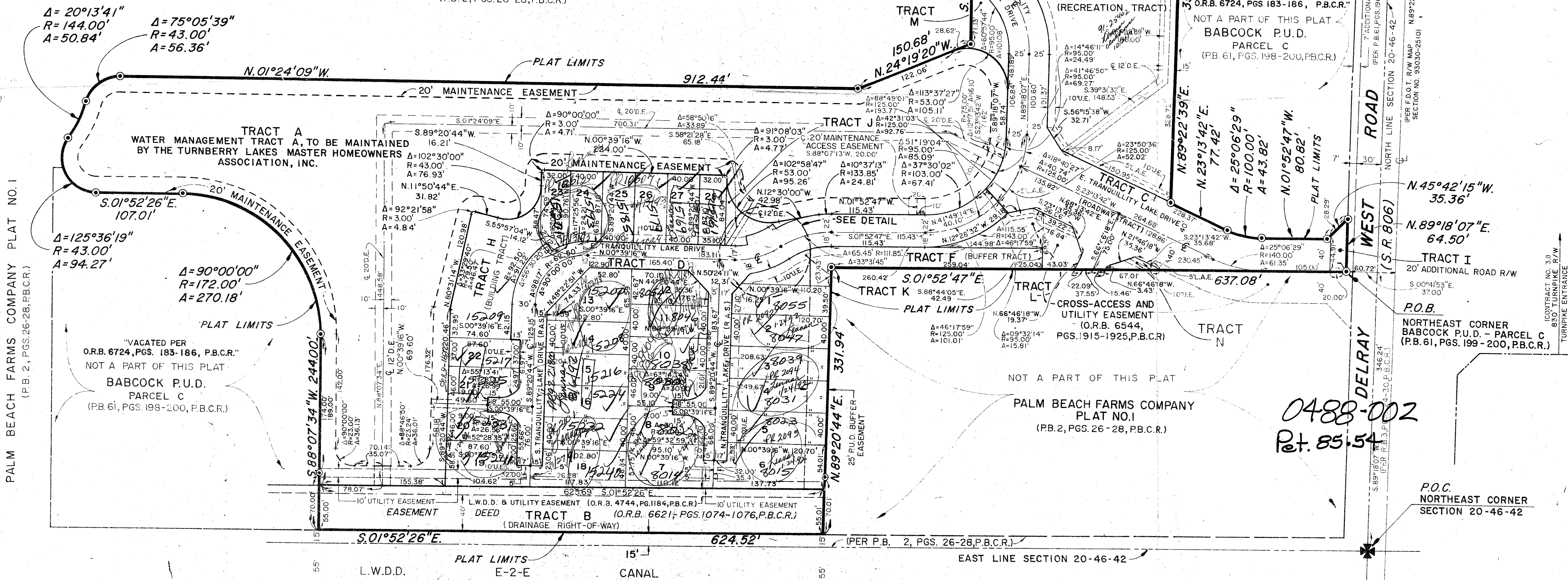
BEING A REPLAT OF A PORTION OF TRACTS 2,3,30,31 AND 34 OF PALM BEACH FARMS COMPANY PLAT NO. 1 (PLAT BOOK 2, PAGES 26 THRU 28) AND A PORTION OF BABCOCK P.U.D. - PARCEL C (PLAT BOOK 61, PAGES 198 THRU 200, BOTH AS RECORDED IN THE PUBLIC RECORDS OF PALM BEACH COUNTY, FLORIDA) LYING IN SECTION 20, TOWNSHIP 46 SOUTH, RANGE 42 EAST

PALM BEACH COUNTY, FLORIDA



PALM BEACH FARMS COMPANY PLAT NO. 1  
 (PB. 2, PGS. 26-28, P.B.C.R.)

FLORIDA'S TURNPIKE  
 (CONTRACT NO. 3.I)



STATE OF FLORIDA  
 COUNTY OF PALM BEACH  
 THIS PLAT WAS FILED FOR  
 RECORD AT \_\_\_\_\_  
 THIS \_\_\_\_\_ DAY OF \_\_\_\_\_  
 A.D., 1990 AND IT IS RECORDED  
 IN PLAT BOOK \_\_\_\_\_ ON PAGES  
 \_\_\_\_\_ AND \_\_\_\_\_  
 JOHN B. DUNKLE,  
 BY: \_\_\_\_\_ DC

SHEET 2 OF 2 SHEETS

TAZ 443

PAGE 18  
 FLOOD MAP # 215A  
 ZONING RS  
 QUAD # 52  
 ZIP CODE 33445  
 SEE 85-54  
 P.O.D. NAME BABCOCK P.U.D.

0488-002  
 Plat. 85-54

GLENEAGLE'S PLAT SEVEN  
 (F.B. 52, PGS. 61-64, P.B.C.R.)

THE LEXINGTON CLUB PLAT NO. 2  
 (P.B. 59, PGS. 18-20, P.B.C.R.)

WATERWAYS AT DELRAY-PHASE I 07/181